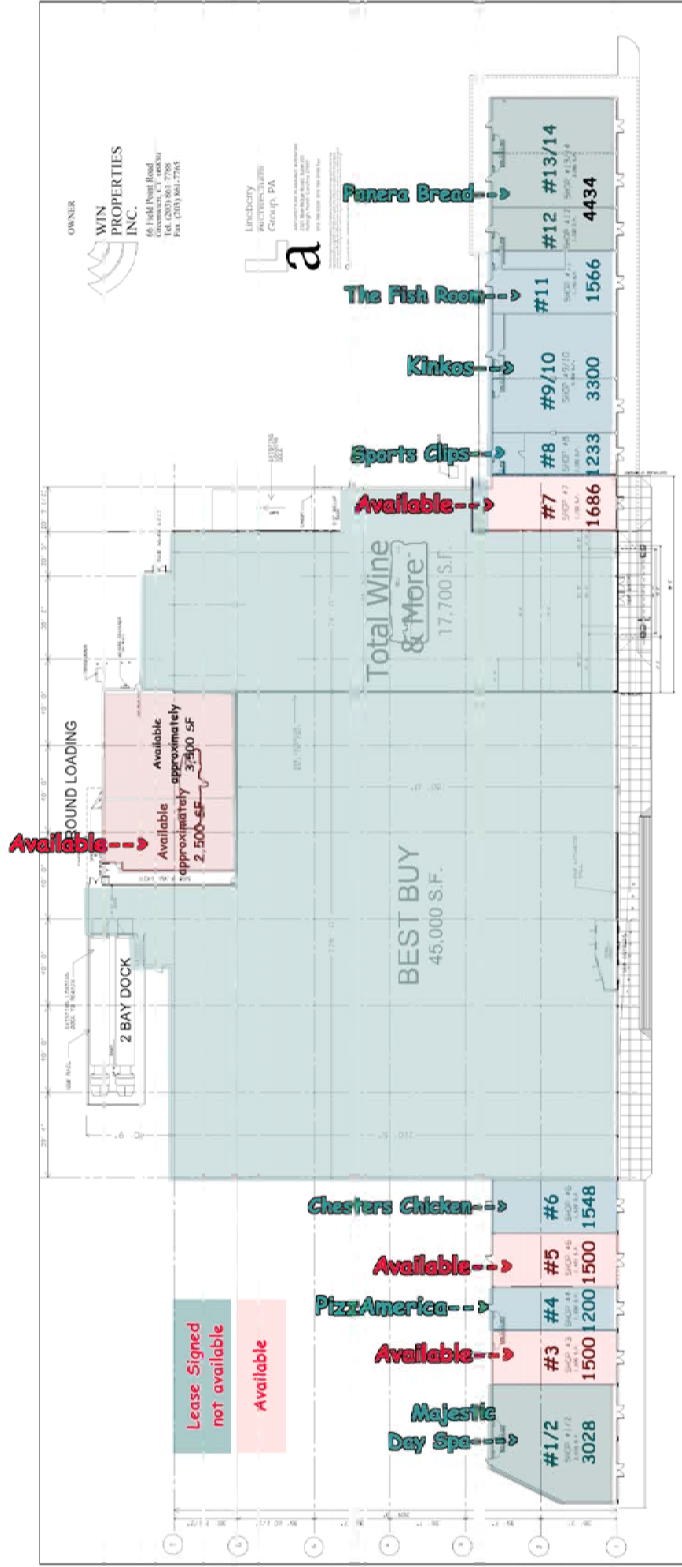


# triangle plaza Capital Boulevard at Old Wake Forest Rd Raleigh, NC

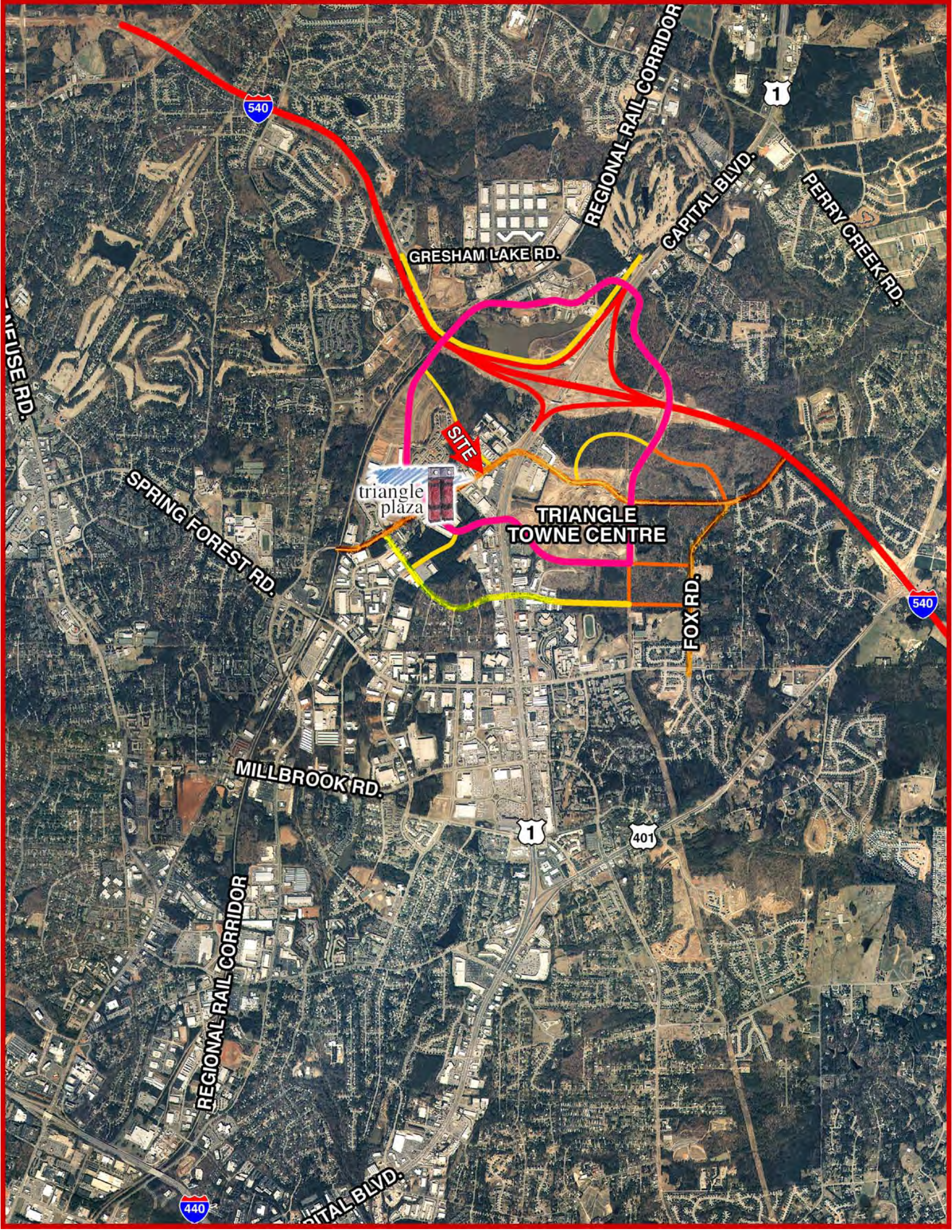


Ruby  
Tuesday



**Rep**  
Retail  
1135 Kildaire Farm Rd Suite 200  
Cary, NC 27511  
919-674-2000  
919-674-2015  
www.retail-rep.com





540

1

540

1

401

440

WILKINSON RD.

SPRING FOREST RD.

GRESHAM LAKE RD.

REGIONAL RAIL CORRIDOR

CAPITAL BLVD.

PERRY CREEK RD.

triangle plaza

SITE

TRIANGLE TOWNE CENTRE

FOX RD.

MILLBROOK RD.

REGIONAL RAIL CORRIDOR

CAPITAL BLVD.



**Retail Rep  
Profile Report  
AGS 2007: Core, Business Summary [NC]**

<b>Demographic Trends 1980-2017</b>	<b>Triangle Plaza 0 - 3 mi</b>	<b>Triangle Plaza 0 - 5 mi</b>	<b>Triangle Plaza 0 - 10 mi</b>
1980 Population	27,650	63,860	202,098
1990 Population	44,116	92,931	269,708
2000 Population	59,967	127,642	361,634
2007 Estimate	75,630	162,926	452,679
2012 Projection	84,774	184,054	508,045
2017 Projection	98,550	215,379	589,320
Ave Annual % Pop Growth since 2000	3.73	3.95	3.60
<b>Median Age</b>			
1980 Median Age	28.9	29.7	28.6
1990 Median Age	31.1	32.3	31.3
2000 Median Age	32.8	34.2	32.7
2007 Median Age	33.9	35.5	34.1
2012 Median Age	35.8	37.4	36.1
<b>Households</b>			
1980 Households	10,139	23,545	72,186
1990 Households	18,378	38,164	108,440
2000 Households	24,343	52,000	142,171
2007 Households	29,890	64,744	175,892
2012 Households	33,168	72,470	196,585
2017 Households	38,065	83,827	226,762
<b>Average Household Income</b>			
1980 Average Income	\$ 26,521	\$ 26,027	\$ 21,721
1990 Average Income	\$ 55,398	\$ 57,399	\$ 52,292
2000 Average Income	\$ 63,687	\$ 69,682	\$ 65,913
2007 Average Income	\$ 69,786	\$ 76,759	\$ 73,090
2012 Average Income	\$ 72,588	\$ 79,360	\$ 75,646
<b>Median Household Income</b>			
1980 Median Income	\$ 28,223	\$ 26,925	\$ 18,372
1990 Median Income	\$ 38,590	\$ 40,293	\$ 34,953
2000 Median Income	\$ 52,342	\$ 55,386	\$ 51,209
2007 Median Income	\$ 65,100	\$ 68,431	\$ 63,093
2012 Median Income	\$ 73,322	\$ 76,594	\$ 71,417

prepared for Win Properties



## Retail Rep Profile Report AGS 2007: Core, Business Summary [NC]

2007 Businesses: Daytime Population and Establishment Size	Triangle Plaza 0 - 3 mi		Triangle Plaza 0 - 5 mi		Triangle Plaza 0 - 10 mi	
	<b>Total Establishments</b>	4,221		8,932		21,198
<b>Total Employees (Daytime Population)</b>	49,469		102,3...		278,8...	
<b>Establishments by number of employees</b>	4,221	% base	8,932	% base	21,198	% base
1 to 4 Employees	2,411	57%	5,282	59%	12,362	58%
5 to 9 Employees	812	19%	1,665	19%	3,892	18%
10 to 19 Employees	474	11%	964	11%	2,322	11%
20 to 49 Employees	339	8%	651	7%	1,602	8%
50 to 99 Employees	110	3%	214	2%	584	3%
100 to 249 Employees	64	2%	131	1%	335	2%
250 to 499 Employees	10	0%	18	0%	66	0%
500 to 999 Employees	1	0%	6	0%	26	0%
1000 or more Employees	1	0%	2	0%	10	0%

prepared for Win Properties